

World Headquarters

HYDRAULEX DETROIT

47995 Gratiot Ave.,
Chesterfield, MI. 48051
800.422.4279
586.949.4240
sales@hydraulex.com
www.hydraulex.com

HYDRAULEX JACKSON

1519 Hwy. 35 North,
Forest, MS 39074
800.962.2703
601.469.1987
sales@metarisusa.com

HYDRAULEX MEMPHIS

4084 E. Shelby Drive,
Memphis, TN 38118
800.238.0155
901.794.2462
fhisales@hydraulex.com

HYDRAULEX SEATTLE

701 North Levee Road,
Puyallup, WA 98371
800.323.8416
253.604.0400
hrdsales@hydraulex.com

NEED HELP? LET'S TALK!

Interested in learning more about our reman units, new aftermarket units, parts or our repair services?

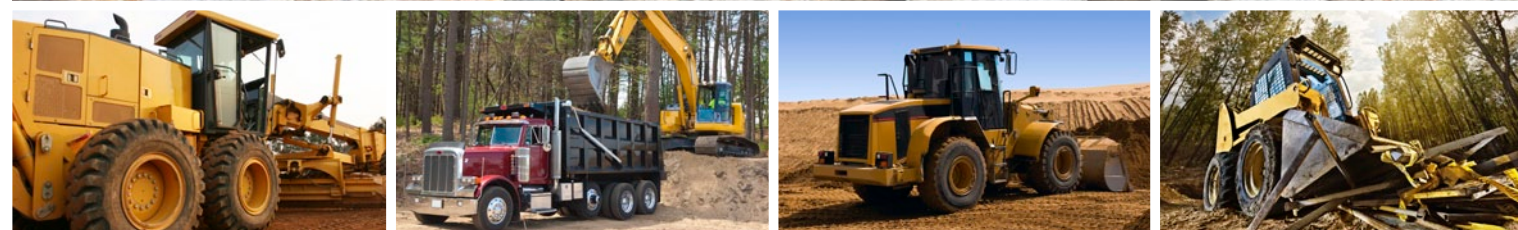
Don't hesitate to give us a call at 1-800-323-8416 or email us at hrdsales@hydraulex.com for product related questions, repair inquiries, or visit us online for additional product information, literature and more.

THE RIGHT REPLACEMENT, RIGHT NOW.®

HYDRAULIC SOLUTIONS FOR CONSTRUCTION EQUIPMENT

Hydraulic Pumps, Motors, Gearboxes,
Main Control Valves, Cylinders & Parts

We're your one stop shop for hydraulic components—supplying reman units, new replacement units, replacement parts, and providing top quality repair services.



All manufacturers names, symbols and descriptions in this document are used for reference purposes only, and it is not implied that any parts listed is the product of these manufacturers.

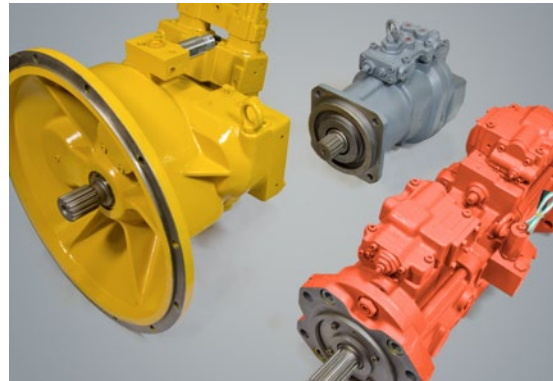
Hydraulex

Tel: 800.323.8416

hrdsales@hydraulex.com

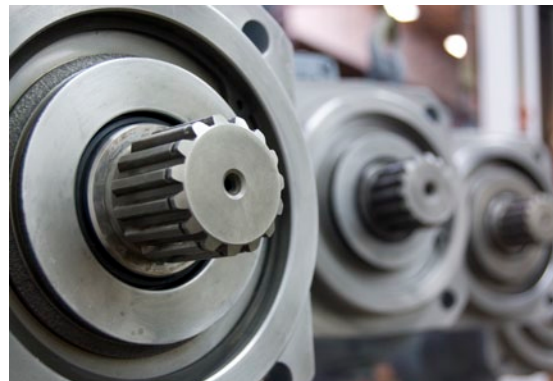
www.hydraulex.com

YOUR SOURCE FOR REPLACEMENT HYDRAULIC PUMPS, MOTORS, VALVES, CYLINDERS, PARTS & REPAIRS



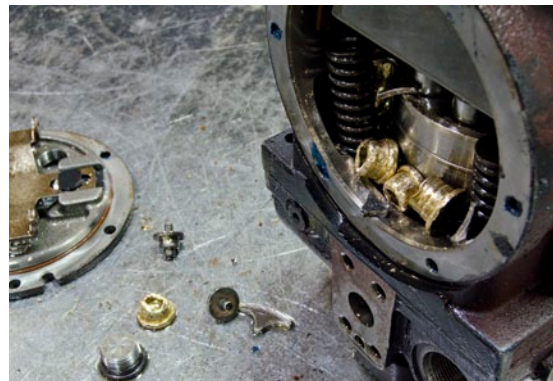
ONE-STOP SHOP

We stock and support a long list of manufacturers hydraulic components like pumps, travel & swing motors, valves and cylinders, that are commonly found on today's mobile construction equipment. This support includes reman units and aftermarket units that deliver OEM level performance, new OEM units, high quality replacement parts and first-class repair services.



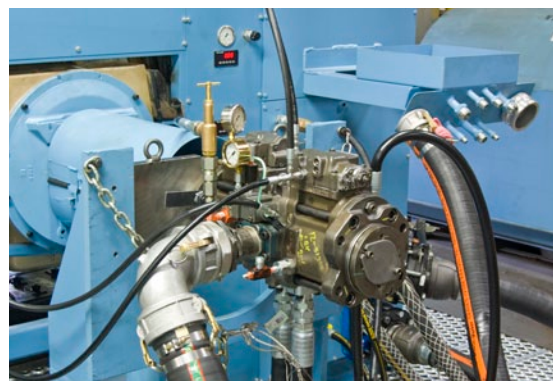
IMMEDIATE AVAILABILITY

Minimize downtime with short lead times and immediate availability. With our vast inventory and capabilities, we are sure to have the units and parts you need most, available in stock - ready for immediate delivery from any of our multiple locations across the U.S. - shipping worldwide. If your unit or part isn't on our shelf, we can often times build it or even source it for you.



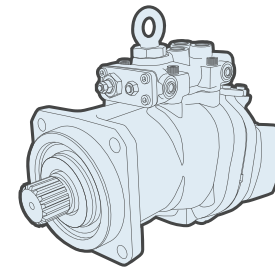
FIRST-CLASS REPAIRS

We have the experience and expertise necessary for repairing and remanufacturing hydraulic main pumps, swing pumps, swing motors, travel motors, main control valves, gearboxes & most all cylinders for Excavators, Haul Trucks, Cranes, Loaders, Dozers, Graders, Rotary Drills and other mobile equipment.



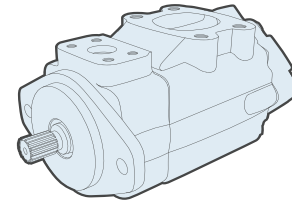
EXCELLENT RELIABILITY

All units, remanufactured and repaired, are tested before leaving any of our facilities. This ensures your unit is set to OEM specifications and will deliver OEM level performance. We are so confident in the quality of our products and services that we back them with an industry leading warranty: 18 months from the time of purchase, 12 months from the time of install.



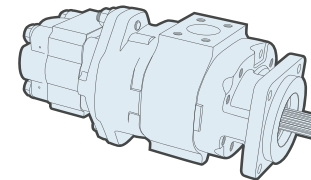
PISTON PUMPS & MOTORS

We carry a wide variety of reman & aftermarket piston pumps and motors from a variety of manufacturers including Rexroth®, Kawasaki®, Sundstrand®, Hitachi®, Linde®, Eaton®, Vickers®, Denison®, to name a few. Both our reman and aftermarket units are built with parts that meet or exceed OEM spec and are fully tested before they leave our facilities.



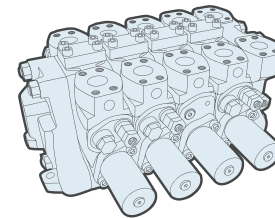
VANE PUMPS & MOTORS

In addition to piston pumps, we stock vane pumps and motors in both remanufactured and aftermarket options. This includes single pumps, tandem pumps and triple pumps. In addition, we stock units that are functional replacements for many Caterpillar® applications. Manufacturers include Vickers® and Denison®.



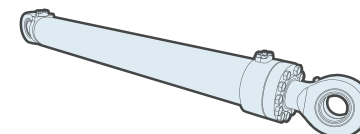
GEAR PUMPS & ORBITAL MOTORS

Our Genuine Metaris line of gear pumps and orbital motors are available in a variety of models and displacements with many options for mounting flanges, shaft configurations & porting. These units are versatile and interchange with many common OEM gear pumps and orbital motors in the market today.



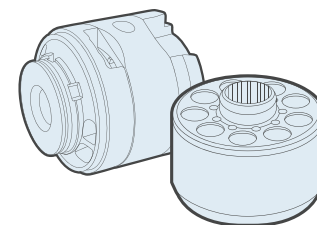
MAIN CONTROL VALVES

Control valves are an integral part of any hydraulic system. And consequently, can be tricky to replace and repair. Not to mention, valve replacement can be very costly with leadtimes unsatisfactory. At Hydraulex, we have a team that specializes in control valve repair and remanufacturing. We can repair and reman valves back to OEM specifications and performance.



CYLINDERS

We regularly repair and reman cylinders found on many different types of construction equipment, like excavators, loaders, dozers, cranes, trucks, etc. With our specialty cylinder departments we are capable of handling any type of cylinder repair. We're also an authorized distributor for Hyco® telescopic cylinders and stock our own Genuine Metaris brand of telescopic cylinders.



REPLACEMENT SPARE PARTS

Hydraulex stocks an extensive inventory of OEM and Genuine Metaris brand piston, vane and gear pump replacement parts. This includes manufacturers such as Rexroth®, Kawasaki®, Vickers®, Denison®, Sundstrand®, Linde®, Hitachi® and Komatsu®. Our large inventory assures you competitive pricing and prompt shipping worldwide.

REPAIR IS ALWAYS AN OPTION

Whether your equipment lifts, digs, hauls, grades or drills, we've got you covered. If you're simply looking for a repair on your current unit or your current unit is one we don't stock or is obsolete, our quality repair services are always an option. We regularly repair components like main pumps, swing pumps, steering pumps, travel motors, swing motors, final drives, gear boxes, main control valves, and all types of hydraulic cylinders.

Call, email or visit us online for more information.

800.323.8416

hrdsales@hydraulex.com

www.hydraulex.com