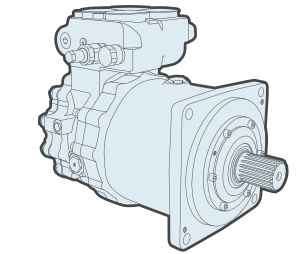


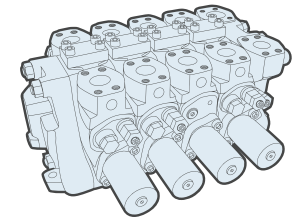
MAIN PUMPS, SWING PUMPS & FAN PUMPS

We carry a variety of reman and service exchange main pumps, swing pumps and fan pumps for shovels and excavators/backhoes. These units are built with parts that meet or exceed OEM spec and are fully tested and set to OEM spec before they leave our facilities. We also repair these pumps and most all other pumps found on today's heavy mining equipment.



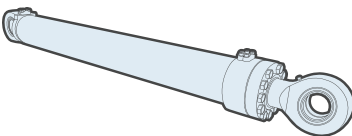
TRAVEL MOTORS, SWING MOTORS & FAN MOTORS

In addition to pumps, we stock replacement units as well as, repair travel motors, swing motors and fan motors for heavy mining equipment. Just like our pumps, these units are built with parts that meet or exceed OEM spec and are fully tested and set to OEM spec before they leave our facilities.



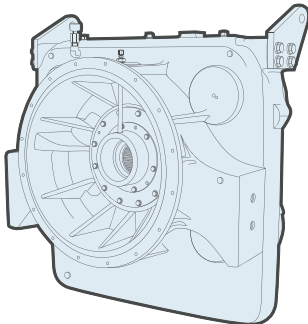
MAIN CONTROL VALVES

At Hydraulex, we have a team that specializes in control valve repair and remanufacturing. We can repair and reman valves back to OEM specifications and performance. We carry remanufactured main control valves for Hitachi EX2500, EX2600, EX3600, EX5500, & EX5600 series shovels and excavators/backhoes. We also stock reman relief and check valves for the main control valves as well.



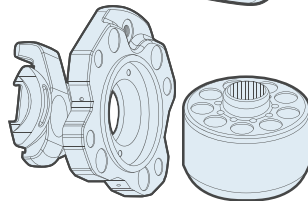
CYLINDERS

We regularly repair and reman cylinders found on many heavy mining machines, like shovels, excavators/backhoes, loaders, dozers, haul trucks, drills, etc. With our specialty cylinder departments we are capable of handling any type of cylinder repair. These cylinders are built with parts that meet or exceed OEM spec and are fully tested before they leave our facilities.



PUMP DRIVE TRANSMISSIONS/GEARBOXES

We can provide an efficient high quality repair or rebuild on your pump drive transmission assemblies, pumps included, in a fraction of the timeframe some lead times from dealers turn out to be. All components and repairs are tested and set to OEM specifications and are backed by our 18 month warranty*.



REPLACEMENT SPARE PARTS

Hydraulex stocks an extensive inventory of new OEM and new aftermarket replacement parts for pumps, motors and main valves. This includes component manufacturers such as Rexroth®, Kawasaki®, Vickers®, Denison®, Sundstrand®, Linde® and Hitachi®. Our large inventory assures you competitive pricing and prompt shipping worldwide. If you repair mining components, we can help.

REPAIR IS ALWAYS AN OPTION

Whether your equipment lifts, digs, hauls, grades or drills, we've got you covered. If you're simply looking for a repair on your current unit or your current unit is one we don't stock or is obsolete, our quality repair services are always an option. We regularly repair components like main pumps, swing pumps, fan pumps, travel motors, swing motors, final drives, gear boxes, main control valves, and all types of hydraulic cylinders.

Call, email or visit us online for more information.

800.323.8416

hrdsales@hydraulex.com

www.hydraulex.com

World Headquarters

HYDRAULEX DETROIT

47995 Gratiot Ave.,
Chesterfield, MI. 48051
800.422.4279
586.949.4240
sales@hydraulex.com
www.hydraulex.com

HYDRAULEX JACKSON

1519 Hwy. 35 North,
Forest, MS 39074
800.962.2703
601.469.1987
sales@metarisusa.com

HYDRAULEX MEMPHIS

4084 E. Shelby Drive,
Memphis, TN 38118
800.238.0155
901.794.2462
fhisales@hydraulex.com

HYDRAULEX SEATTLE

701 North Levee Road,
Puyallup, WA 98371
800.323.8416
253.604.0400
hrdsales@hydraulex.com

NEED HELP? LET'S TALK!

Interested in learning more about our reman units, new aftermarket units, parts or our repair services?

Don't hesitate to give us a call at 1-800-323-8416 or email us at hrdsales@hydraulex.com for product related questions, repair inquiries, or visit us online for additional product information, literature and more.

THE RIGHT REPLACEMENT, RIGHT NOW.®

All manufacturers names, symbols and descriptions in this document are used for reference purposes only, and it is not implied that any parts listed is the product of these manufacturers.

HYDRAULIC SOLUTIONS FOR MINING EQUIPMENT

Hydraulic Pumps, Motors, Gearboxes,
Main Control Valves, Cylinders & Parts



We're your one-stop shop for hydraulic components—supplying reman units, new replacement units, replacement parts, and providing top quality repair services.



Hydraulex

Tel: 800.323.8416

hrdsales@hydraulex.com

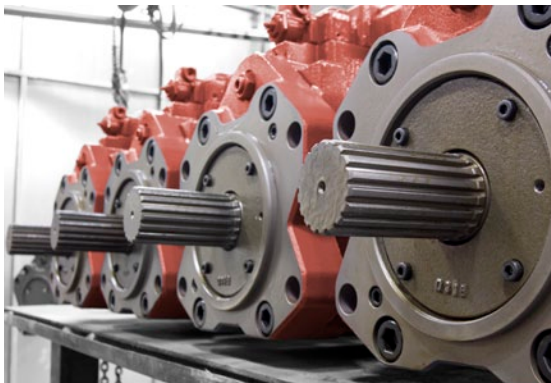
www.hydraulex.com

YOUR SOURCE FOR REPLACEMENT HYDRAULIC PUMPS, MOTORS, VALVES, CYLINDERS, PARTS & REPAIRS



ONE-STOP SHOP

We stock and support a variety of equipment manufacturers hydraulic components like main pumps, swing pumps, travel & swing motors, main control valves and cylinders, that are commonly found on today's heavy mining equipment. This support includes reman units and service exchange units that all deliver OEM level performance, high quality replacement parts and first-class repair services.



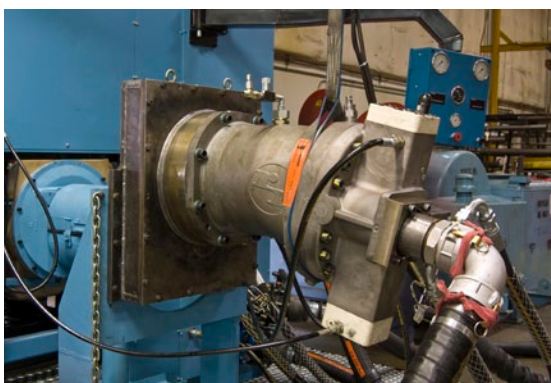
IMMEDIATE AVAILABILITY

Minimize downtime with short lead times and quick turnaround changeouts. We typically have multiple units in-stock, whether that's pumps, motors, valves or cylinders you're looking for, ready to ship - shipping worldwide. If your unit or part isn't on our shelf, we can often times build it and test it all in a shorter timeframe than the lead time given by the OEM.



FIRST-CLASS REPAIRS & REBUILDS

We have the experience and expertise necessary for repairing and remanufacturing hydraulic main pumps, swing pumps, swing motors, travel motors, main control valves, gearboxes, pump drive transmissions & most all cylinders for Shovels, Excavators/Backhoes, Haul Trucks, Loaders, Dozers, Graders, Rotary Drills and other heavy mining equipment.



EXCELLENT RELIABILITY

All units, remanufactured and repaired, are tested before leaving any of our facilities. This ensures your unit is set to OEM specifications and will deliver OEM level performance. We are so confident in the quality of our products and services that we back them with an industry leading warranty: 18 months from the time of purchase, 12 months from the time of install.



DISCOVER HOW WE CAN HELP YOU WITH YOUR MINING EQUIPMENT

Labels for Excavator:

- MAIN PUMPS SWING PUMPS
- MAIN CONTROL VALVES
- SWING TRANSMISSIONS SWING MOTORS
- DOOR/CLAM CYLINDER (NOT VISIBLE)
- SWIVEL (CENTER JOINT)
- FINAL DRIVE
- TRACK ADJUSTERS
- HOIST CYLINDERS
- ARM CYLINDER
- LEVEL CYLINDER
- BUCKET CYLINDERS

SHOVELS, EXCAVATORS & HAUL TRUCKS

We can provide New Service Exchange units and top-of-the-line quality repairs on many of the components found on today's mining shovels, excavators and haul trucks.

- New Service Exchange main pumps, swing pumps and cylinders - allow for unit changeouts and minimizes downtime
- Component manufacturer support includes Kawasaki®, Rexroth®, Vickers®, Denison® and more
- Expert repair services on pumps, motors, final drives, pump drive transmissions, swing transmissions, main control valves, cylinders and suspension

Labels for Haul Truck:

- HOIST PUMP
- HOIST CYLINDER
- HOIST VALVE
- BRAKE/STEERING PUMP
- REAR SUSPENSION
- FRONT SUSPENSION
- STEERING CYLINDERS

DOZERS, LOADERS & DRILLS

We commonly repair pumps, valves and cylinders off of dozers, drills and loaders. New aftermarket interchange pumps and reman units are also available for some machines.

- New Aftermarket interchange pumps and reman pumps available for select machine main pumps & steering pumps
- Expert repair services on pumps, motors, valves and all types of cylinders
- Component manufacturer support includes Rexroth®, Vickers®, Denison® and more

Labels for Dozer/Loader:

- BLADE LIFT CYLINDERS
- BLADE TILT CYLINDERS
- MAIN PUMP STEERING PUMP
- VALVE
- RIPPER LIFT CYLINDERS
- RIPPER TILT CYLINDERS

Labels for Drill Rig:

- GEAR BOX
- MOTORS
- PULL DOWN CYLINDERS
- MAST RAISE CYLINDERS
- FINAL DRIVES
- PUMPS
- OUTRIGGER CYLINDERS

Labels for Wheel Loader:

- LIFT CYLINDERS
- TILT CYLINDER
- VALVE
- MAIN PUMP
- STEERING CYLINDERS