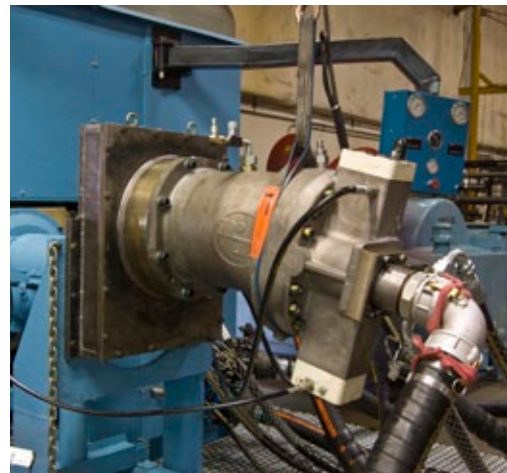


SERVICE EXCHANGE UNITS

You have options when it comes to servicing the hydraulic components on your equipment. One such option is our Service Exchange (New) units which are just that—brand new units built with new OEM parts. With this option you simply swap out your old unit for the new unit and return your old core for a core credit. You're back up and going with minimal downtime.

- All units are brand new and built with new OEM parts
- All units are tested and set to OEM specifications
- Minimizes downtime and provides a quick turnaround—especially for unit changeouts
- OEM level performance and backed by an industry leading 18 month warranty*



QUALITY REPAIR SERVICES

We've been repairing hydraulic components for over 40 years. We have the knowledge, expertise and equipment necessary (including multiple test stands up to 400hp for larger displacement units) to repair most all hydraulic components found on today's mining equipment—big and small.

- Repairs and machining work is done in-house minimizing costs and turnaround time
- All units are tested and set to OEM specifications
- Multiple test stands capable of testing the largest hydraulic equipment
- Repairs are covered by our industry leading 18 month warranty*



REPLACEMENT UNITS & PARTS SUPPORT

Our unmatched parts availability and aftermarket interchange unit stock is second to none in the industry—demonstrating a commitment to provide you the parts and units you need, when you need them. We ship all over the world, so no matter where you may be, we can get them to you.

- OEM parts stocked for a variety of manufacturers
- We're an Authorized Service Parts Distributor for Kawasaki®
- Stock parts for some of the surplus/obsolete units still in use
- Can manufacture replacement parts if none are available or are no longer made by the OEM

* Warranty - 18 months from date of purchase, 12 months from date of install.

Hydralex Global Mining Div.
www.hydraulicrepair.net

701 North Levee Rd
Puyallup, WA 98371

Toll Free: 800.323.8416
Tel: 253.604.0400

Fax: 253.604.0408
sales@h-r-d.com



Connect with us:    

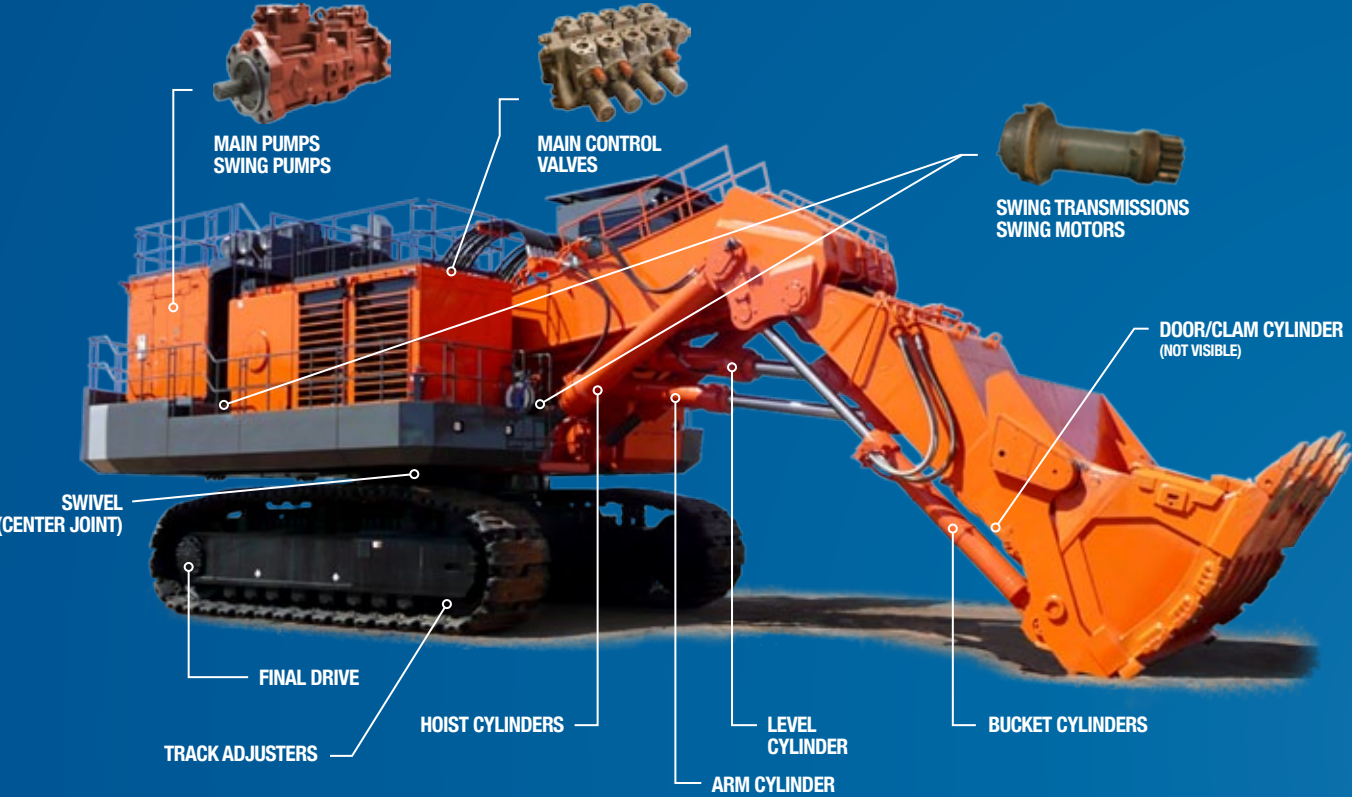
All manufacturers names, symbols and descriptions in this document are used for reference purposes only, and it is not implied that any parts listed is the product of these manufacturers.

MAXIMIZE UPTIME FOR INCREASED PRODUCTIVITY

Service Exchange Units, Repair Services and Replacement Units
& Parts for Mining Equipment Hydraulic Systems



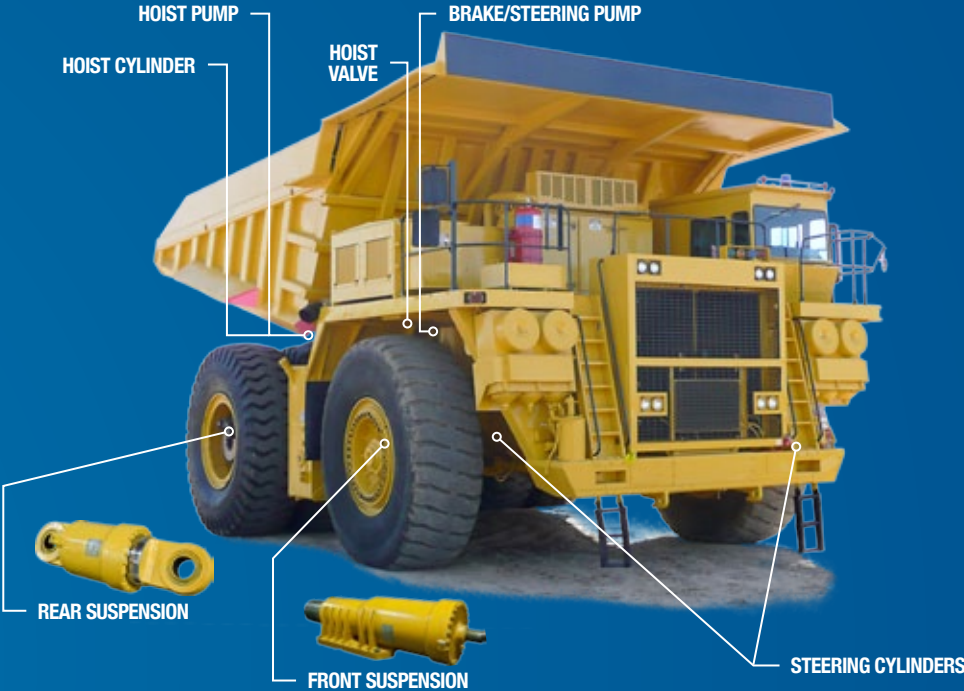
DISCOVER WHAT WE CAN DO FOR YOUR MINING EQUIPMENT



SHOVELS, EXCAVATORS & HAUL TRUCKS

We can provide New Service Exchange units and top-of-the-line quality repairs on many of the components found on today's mining shovels, excavators and haul trucks.

- New Service Exchange main pumps, swing pumps and cylinders - allow for unit changeouts and minimizes downtime
- Component manufacturer support includes Kawasaki®, Rexroth®, Vickers®, Denison® and more
- Expert repair services on pumps, motors, final drives, swing transmissions, main control valves, cylinders and suspension



DOZERS, LOADERS & DRILLS

We commonly repair pumps, valves and cylinders off of dozers, drills and loaders. New aftermarket interchange pumps and reman units are also available for some machines.

- New Aftermarket interchange pumps and reman pumps available for select machine main pumps & steering pumps
- Expert repair services on pumps, motors, valves and all types of cylinders
- Component manufacturer support includes Rexroth®, Vickers®, Denison® and more

