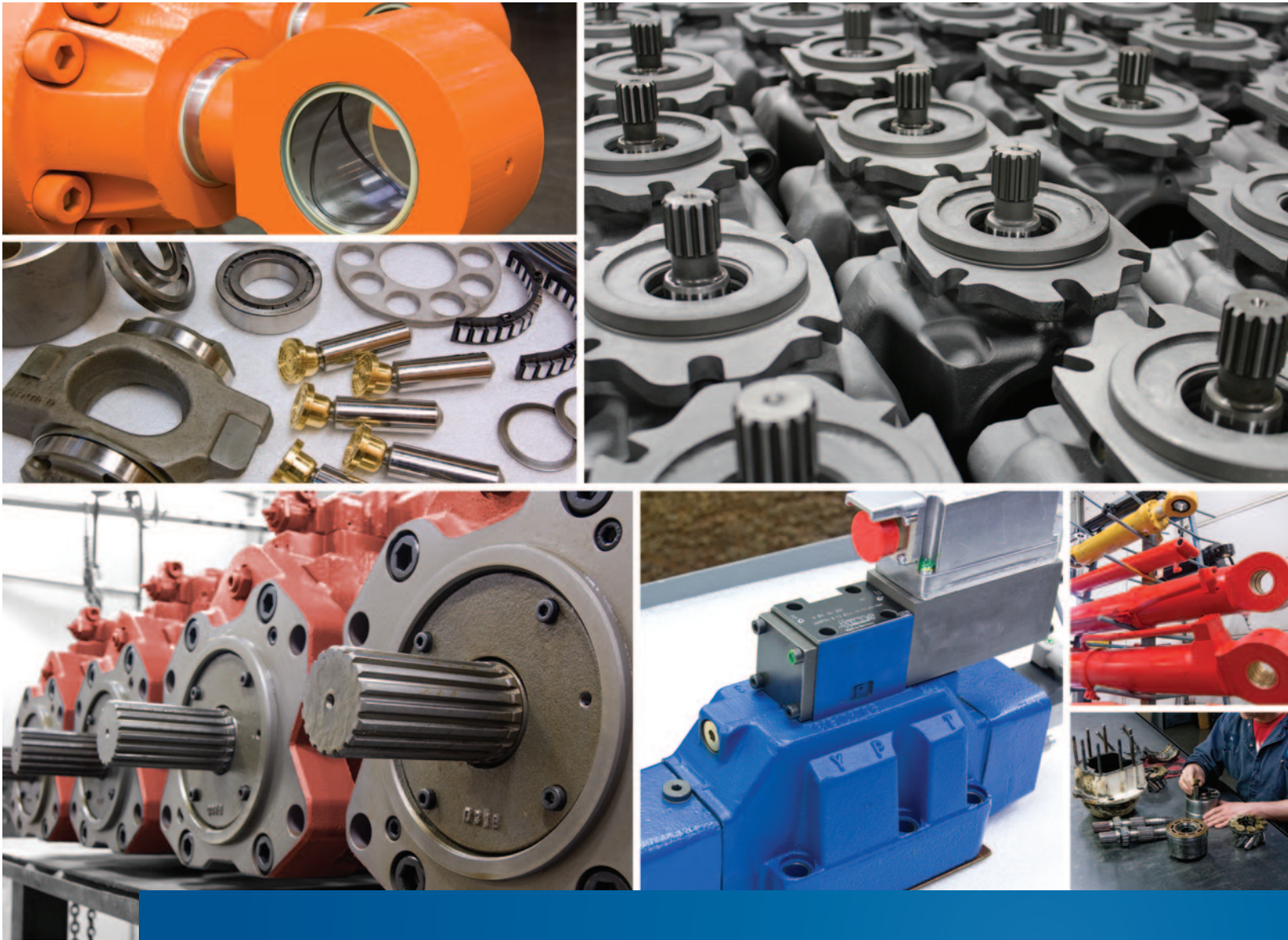


Serving Your Immediate Hydraulic Needs

PRODUCT & SERVICE SUPPORT



 **HYDRALEX**
GLOBAL
The Right Replacement, Right Now[®]

www.hydralex.com

Your Source for Replacement Hydraulic Pumps, Motors, Valves, Cylinders, Parts & Repairs

Today, there are more reasons than ever to choose Hydraulex Global for all of your hydraulics needs. With our extensive inventory, unmatched technical expertise and competitive pricing, we create a one-stop shop for OEM, remanufactured & aftermarket new hydraulic component sales, remanufacturing and repairs for many mobile and industrial hydraulic applications.

Pumps & Motors

| | Reman | Aftermarket | Repair |
|--|-------|-------------|--------|
| Bosch®/Racine® | | | |
| RPV | | | ● |
| PVQ, VPV | ● | | ● |
| PSV | ● | | ● |
| PVF, PVK, PVQ, PVS, PVT | ● | | ● |
| 20L, 20H, E055, 80L, 80M, 80H | ● | ● | ● |
| Continental® | | | |
| HPV, PVR | ● | | ● |
| PVX | | | ● |
| Denison® | | | |
| M4, T6, T7 | ● | ● | ● |
| P6, P7, M6, M7, M8, P14, M14 | ● | | ● ● ● |
| Eaton® | | | |
| Series 1, 2 & 3, Models 33, 39, 46, 54, 64, 76 | ● | ● (Parts) | ● |
| Cessna | ● | ● (Parts) | ● |
| Hitachi® | | | |
| HPV | ● ● | ● ● (Parts) | ● ● |
| HMGC, HMGF | ● | ● (Parts) | ● ● |
| Kawasaki®/Staffa® | | | |
| K3V, K3VL, K3SP, K5V, K7V, NV | ● ● | ● ● (Parts) | ● ● |
| HMB | ● | | ● |
| MB, MX, M2X, M3X, M5X | ● | ● ● (Parts) | ● ● |



PSV Series



T6 Series



HPV Series



K3V & K5V Series



HMB Series

Support By Location:

● **Attica Hydraulic Exchange**
Hydralex Global - Michigan

● **Hydraulic Repair & Design**
Hydralex Global - Washington

● **Flint Hydrostatics**
Hydralex Global - Tennessee

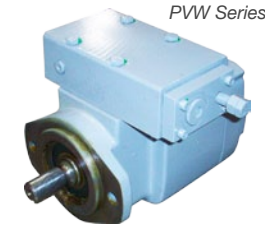
● **Metaris**
Hydralex Global - ON, Canada
Hydralex Global - Mississippi

Pumps & Motors cont.

| | Reman | Aftermarket | Repair |
|--|-------|---------------|--------|
| Komatsu® | | | |
| HPV | ● ● | ● ● (Parts) | ● ● |
| Linde® | | | |
| BMF, BMR, BMV, BPR, BPV | ● | ● (OEM Units) | ● ● |
| HMF, HMR, HMV, HPR, HPV | ● ● | ● (Parts) | ● ● |
| Mitsubishi® | | | |
| SPK10/10, SPV10/10 | ● | ● (Parts) | ● ● |
| AP12 | ● | ● (Parts) | ● |
| Oilgear® | | | |
| PVWH, PVWJ, PVWW, PVG, PVM, PVK | ● | | ● |
| D, C | | | ● |
| Parker® | | | |
| PAVC, PVP, PVV | ● | | ● |
| F11, F12, MF | | | ● ● |
| Rexroth®/Uchida® | | | |
| AA2F, A2FO, A2FM | ● | ● (Parts) | ● |
| A4F, A4V, A4VG, A4VSO | ● | ● (Parts) | ● ● |
| A6V, A6VM, A7V, A8V, A8VO | ● | ● (Parts) | ● ● |
| A10V | ● ● | ● ● ● (Parts) | ● ● ● |
| A11V | ● | ● (Parts) | ● ● |
| V3, V4, V5, V6, V7 | ● | | ● |
| Sauer Danfoss®/Sundstrand® | | | |
| Series 15, 18 | ● | | ● ● |
| Series 20 - 27 | ● | ● ● | ● ● |
| Series 30, 40, 44, 45, 51V, L, Series 90, H1 | ● | ● (Parts) | ● ● |
| Vickers® | | | |
| V10, V20, VQ, VHO, VMQ | ● | ● ● | ● ● |
| 35/45/50M | ● | | ● |
| MHT Series, MVE, TB | ● | | ● |
| PVB, PVH, PVE, PVQ, PVM, TA, PVA | ● | ● | ● |
| M2-210, MFB | ● | ● | ● |



HPR Series



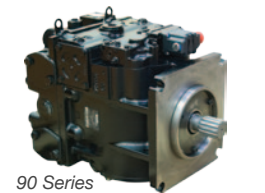
PVW Series



A10V Series



A8V Series



90 Series



VQ Series



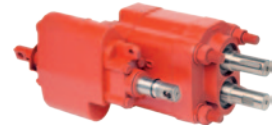
MHT Series

This is a partial list of common units we stock and/or service; please call us to discuss our ability to support less common items.

Pumps & Motors cont.

| | Reman | Aftermarket | Repair |
|--|-------|-------------|--------|
| Dump Pumps | | | |
| MH101, MH101G, MH102, MH102G | | • | |
| WFD2.0 | | • | |
| Gear Pumps | | | |
| MH15, 20, 25, 30, 31, 37, 50, 51, 75, 76 | | • | |
| MH315, 330, 350, 365 | | • | |
| Orbital Motors - Interchange with Eaton®/Char-Lynn®, Danfoss®, Parker® and White® | | | |
| MMPS, MMRSW, MMH, MMW | | • | |
| MMS, MMK, MMT, MMV | | • | |
| PTOs (Power Take-offs) - Interchange with Muncie®, Chelsea® and Bezares® | | | |
| MH6, MH8, MHD8 | | • | |

We also stock Pumps & Motors for Case®, Caterpillar®, Grove®, JCB® & Volvo® Applications



Dump Pumps



Gear Pumps



Orbital Motors



PTOs



DG5 Series



R5 Series



CT Series



Main Control Valves

Valves

| | Reman | Aftermarket | Repair |
|------------------------------|-------|-------------|--------|
| Bosch® | | | |
| 081WV | • | • | • |
| Continental® | | | |
| VS | • | | • |
| Denison® | | | |
| R4, R5 | • | • | • |
| 2F1C | • | | • |
| Parker® | | | |
| V1, VW, V3W | • | | • |
| PR | • | | • |
| Racine® | | | |
| FD4, FB1, FF2 | • | | • |
| Rexroth® | | | |
| 4WE | • | • | • |
| DB | • | | • |
| 2FRM | • | | • |
| Vickers® | | | |
| DG4, DG5 | • | • | • |
| CG, CS, CT, URG | • | • | • |
| FN, DGFN, FCG | • | • | • |
| Main Control Valves | | | |
| Mobile Equipment Main Valves | • | | • |

Servo & Proportional Valves

| | Reman | Aftermarket | Repair |
|--|-------|-------------|--------|
| Abex® | | | |
| 410, 415, 425, 450 | • | • | • |
| Atchley® | | | |
| 21*, 22*, 231, 24*, 261 | • | • | • |
| Atos® | | | |
| RZ*, AG*, DH*, DP*, DL* | • | | • |
| Bosch®/Rexroth® | | | |
| 3DS, 4WR, 4WS, 3D, 3F, 3W, 5WR | • | • | • |
| DB, FE, STW, Z4, ZBR, ZDR | • | | • |
| Dyval® | | | |
| DY5, DY10, DY12, DY45 | • | • | • |
| HR Textron® | | | |
| 27*50 | • | | • |
| Hydrolux® | | | |
| SE4, WEP, WSH | • | • | • |
| Moog® | | | |
| 3*, 60*, 6*, 7*, A076, D*, E050 | • | • | • |
| 64*, 65*, 66*, 68*, D6 | • | • | • |
| MTS® | | | |
| 25* | • | • | • |
| Parker® | | | |
| 15, 20, 50, 200, 1000, BD | • | | • |
| 3D, D1, D3, D4, D8, D9, PH76, RE06, SE20, TD | • | | • |
| Pegasus® | | | |
| 15, 12*, 13*, 14*, 16*, 18*, 128*, 20* | • | • | • |
| Vickers® | | | |
| SA4, SC4, SH4, SM4, SP4 | • | • | • |
| CGE, EHST, KA, KB, KC, KD, KF, KH, KS, KT | • | • | • |



4WR Series



62-1*** Series



771K Series



EHST Series



SM4 Series



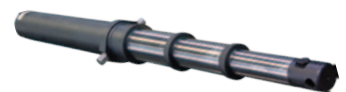
Mobile Equipment Cylinders



Welded Cylinders



Tie Rod Cylinders



Telescopic Cylinders

Cylinders

| | Reman | Aftermarket | Repair |
|------------------------------------|-------|---------------|--------|
| Cylinders | | | |
| Earth Moving, Marine, Press, Crane | • | | • |
| Telescopic, Excavator, Chip Dump | • | | • |
| Hycy® Telescopic Cylinders | | | |
| 3-Stage, 4-Stage & 5-Stage | | • (OEM Units) | • |

We are also capable of Manufacturing New & Custom Built Cylinders for many Applications

Hydralex Global - A Recognized Global Leading Provider of High Quality Hydraulic Components



Products We Offer

- Inline Piston Pumps
- Radial Piston Pumps & Motors
- Bent Axis Piston Pumps & Motors
- Fixed Volume Vane Pumps
- Variable Volume Vane Pumps
- Gear Pumps
- Vane Motors
- Axial Piston Motors
- High Speed Motors
- Servo Motors
- Orbital Motors
- Directional Valves
- Flow Control Valves
- Pressure Control Valves
- Relief Valves
- Check Valves
- Stack Valves
- Servo Valves
- Proportional Valves
- PTOs (Power Take-offs)
- Cylinders



Hydralex Global Corporate
48175 Gratiot Ave
Chesterfield, MI 48051
Toll Free: 800.422.4279
Tel: 586.949.4240
www.hydralex.com

| | |
|-------------------------------|-------------------|
| Hydralex Global - Michigan | Tel: 586.949.4240 |
| Hydralex Global - Mississippi | Tel: 601.469.1987 |
| Hydralex Global - ON, Canada | Tel: 416.638.6000 |
| Hydralex Global - Washington | Tel: 253.604.0400 |
| Hydralex Global - Tennessee | Tel: 901.794.2462 |

| |
|--|
| sales@ahx1.com |
| sales@metarಿಸusa.com |
| sales@metarಿಸ.com |
| sales@h-r-d.com |
| sales@flinthydrostatics.com |



Connect with us:



All manufacturers names, symbols and descriptions in this document are used for reference purposes only, and it is not implied that any parts listed is the product of these manufacturers.