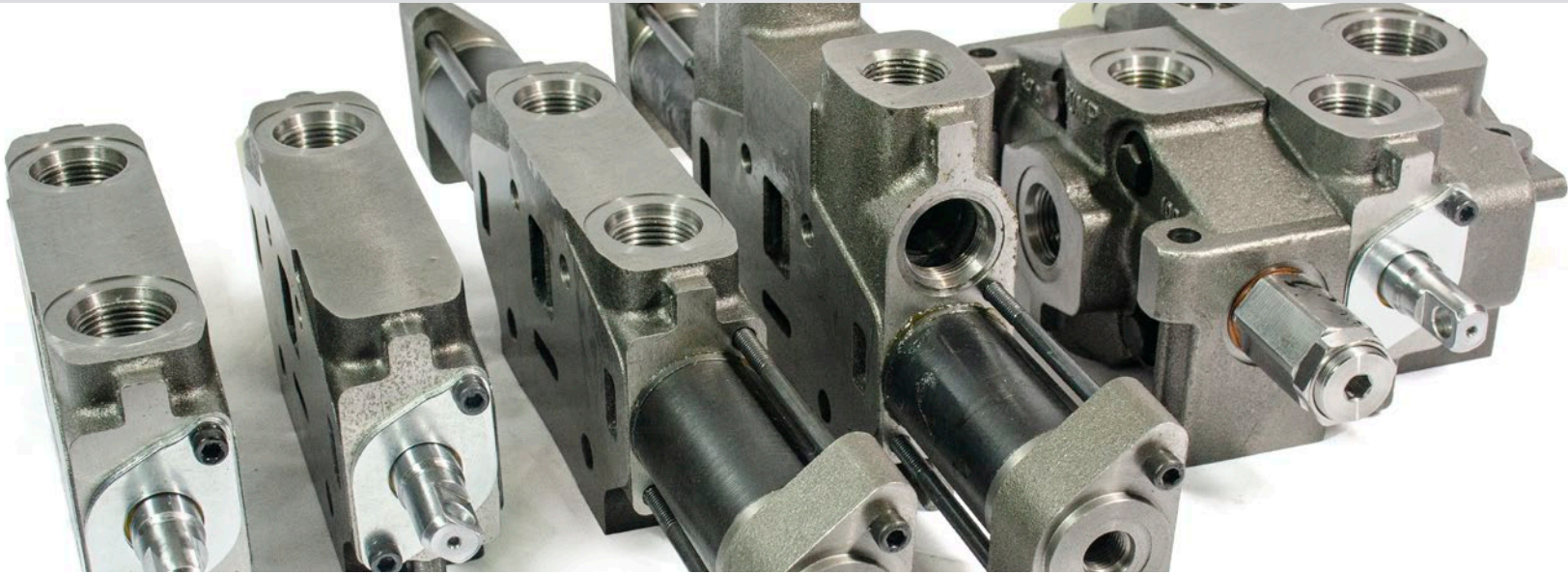


Genuine Metaris MHDV Series Valves

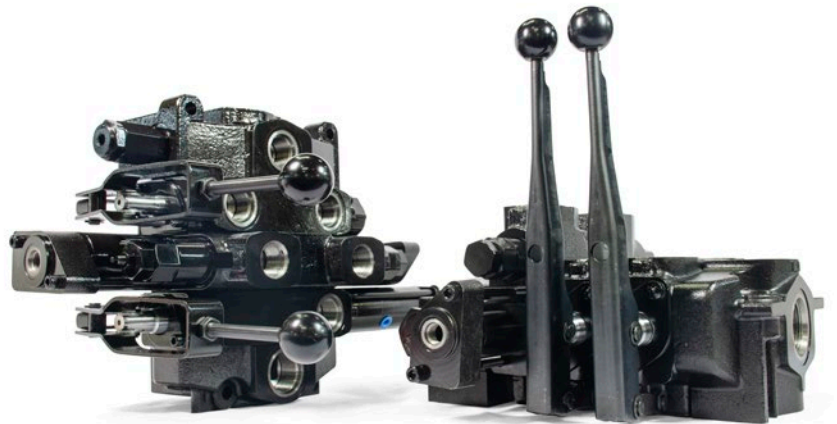
Sectional Directional Control Valves



Putting You in Control of Your Hydraulic System

Our Genuine Metaris MHDV20 & MHDV35 series directional control valves are engineered specifically for the Truck Equipment market providing an interchange solution to common valves already on the market. Steel castings, precision machined and hard-chrome plated spools provide durability and reliability. The stackable or sectional design allows for a modular application providing an opportunity to customize and tailor to your specific needs. Our MHDV Series Directional Control Valves are functional interchange replacements for: Parker/Commercial® DVA/DVG20, DVA/DVG35, VA/VG20, VA/VG35, A20, V40, V42 and 25P Series, and Muncie® 60V Series.

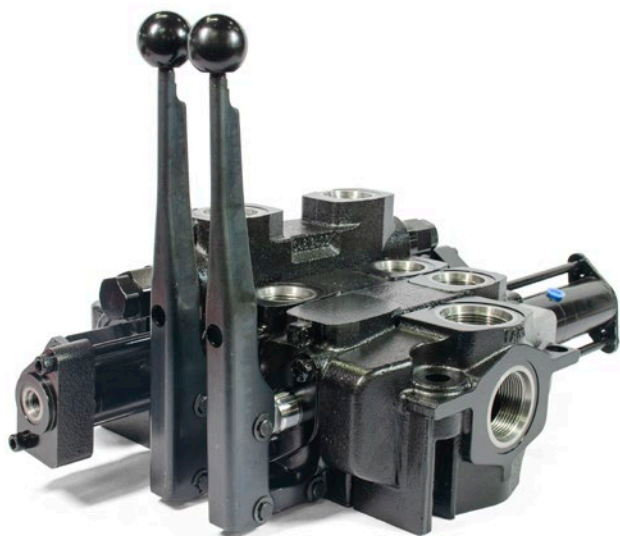
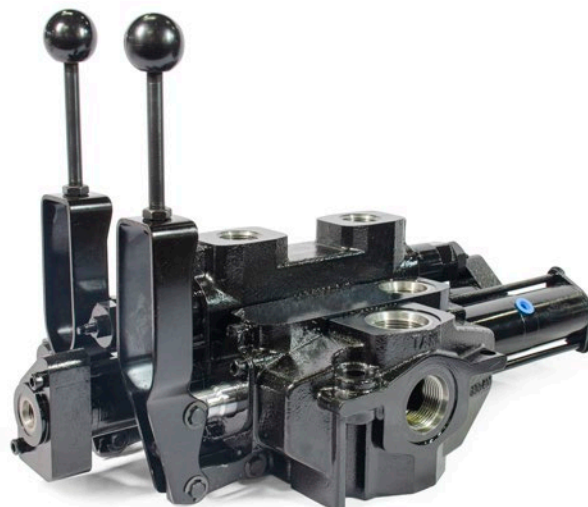
- Heavy duty high-strength iron alloy castings
- Built-in, full flow relief valves
- Precision machined & hard-chrome plated spools
- Large variety of spool types, port options including work port reliefs, anti-cavitation valves, and power beyond outlets, provide flexible design/application options
- Stackable (sectional) design allows for customizing the assembly to specific needs & applications
- Work sections are 100% pre-assembled and tested prior to delivery
- Interchangeable with Parker® DVA/DVG20, DVA/DVG35, VA/VG20, VA/VG35, A20, V40, V42 and 25P series; and Muncie® 60V series



MHDV20 & MHDV35 Series Directional Valve

MHDV20 FEATURES

- Built-in, full flow relief valves
- Parallel and series circuits in one bank
- Manual, hydraulic, electric or pneumatic operation
- Sectional construction for maximum flexibility
- Spool changeover capability for right-hand or left-hand valve assemblies
- Low internal pressure drop
- Work sections are 100% pre-assembled and tested prior to delivery
- Stackable (sectional) design allows for customizing the assembly to specific needs & applications
- Interchangeable with Parker® DVA/DVG20, VA/VG20, A20, V40, V42 and 25P series; and Muncie® 60V series



MHDV35 FEATURES

- Built-in, full flow relief valves
- Parallel and series circuits in one bank
- Manual, hydraulic, electric or pneumatic operation
- Sectional construction for maximum flexibility
- Spool changeover capability for right-hand or left-hand valve assemblies
- Low internal pressure drop
- Work sections are 100% pre-assembled and tested prior to delivery
- Stackable (sectional) design allows for customizing the assembly to specific needs & applications
- Interchangeable with Parker® DVA/DVG35, VA/VG35 series; and Muncie® 60V series

APPLICATIONS

- ✓ Utility Equipment
- ✓ Spreaders
- ✓ Refuse Equipment
- ✓ Tanker Bodies
- ✓ Snow & Ice Control Vehicles
- ✓ Dump Bodies
- ✓ Tow Vehicles
- ✓ Feed Bodies
- ✓ Lube/Service Trucks

ASSEMBLY CODE EXAMPLE

	INLET	WORK SECTION	WORK SECTION	OUTLET
SECTION PART NUMBERS:	MHDV20-A88	- MHDV20-DA7	- MHDV20-DA7	- MHDV20-TR88
VALVE ASSEMBLY CODE:	MHDV20-A88-DA7-DA7-TR88			

Model Code Breakdown

INLET & MID-INLET CODING

1 2 3 4
MHDV20 - A - 88 - A

Series¹
MHDV20 = 40 GPM
MHDV35 = 70 GPM

Style²
A = Standard
SF = Mid-Inlet Split
CF = Mid-Inlet Combined

1st Code - Side Port³
2nd Code - Top Port

0 = No port **3** = 3/4" NPT **5** = SAE-8 **7** = SAE-12
1 = 3/4" Split Flange **4** = 1" NPT (*MHDV35 Only*) **8** = SAE-16
2 = 1/2" NPT **5** = 1-1/4" NPT **6** = SAE-10 **9** = SAE-20
 (*MHDV20 Only*)

MRV or Plug Option⁴
None = Machined (Standard)
A = MRV Installed
AH = HMRV Installed
P = MRV Plug Installed
A* (XXXX) = MRV Installed w/other pressure setting

WORK SECTION CODING

1 2 3 4 5 6 7
MHDV20 - H - D - A - 8 - 33(2500/2500) - *

Series¹
MHDV20 = 40 GPM
MHDV35 = 70 GPM

Style²
None = Lowboy
H = Hi-Boy

Spool Function + Circuit³
S = Parallel | Single Acting | Cylinder Spool, B Port
D = Parallel | Double Acting | Cylinder Spool
WHD = Series | Double Acting | Cylinder Spool (Hi-boy only)
M = Parallel | Double Acting | Motor Spool
WHM = Series | Double Acting | Motor Spool (Hi-boy only)

Spool Action & Function⁴
A = Spring Return
B = 3-Position Detent
V = Single-ended Air Shift, Metering
VA = Single-ended Air Shift, On/Off
X = Hydraulic Remote Control, Metering

A & B Port Size⁵
0 = No port **5** = SAE-8
1 = 3/4" Split Flange **6** = SAE-10
2 = 1/2" NPT **7** = SAE-12
3 = 3/4" NPT **8** = SAE-16
4 = 1" NPT **9** = SAE-20

LH or RH Assy.⁷
None = Left (Standard)
R = Right

Hi-Boy Only⁶
 Port Accessory Relief Valve
1st Code - A Port
2nd Code - B Port
None or 5 = Machined with Plastic Port Covers (Standard)
0 = Not Machined
1 = PRVAC - Relief Valve w/anti-cavitation
2 = AC - Anti-cavitation only, Screw Adj.
3 = PRVS - Relief Valves, Screw Adj.
 PRVS1 - 1000psi
 PRVS2 - 2000psi
 PRVS3 - 2500psi
 To specify pressure setting use: (XXXX) format.
 Example: 3 (2000)
6 = PPRVS - Pilot Pressure Relief
9 = PRVP - Port Relief Plug
 When specifying pressure setting use: (XXXX) format.
 Example: MHDV20-HDA7-33(2000/2000)

OUTLET CODING

1 2 3
MHDV20 - TR - 88

Series¹
MHDV20 = 40 GPM
MHDV35 = 70 GPM

Style²
TR = Tank Return **TTR** = Thru-hole
PB = Power Beyond **TPB** = Thru-hole

1st Code - Side Port³
2nd Code - Top Port
0 = No port **5** = 1-1/4" NPT
1 = 3/4" Split Flange **6** = SAE-10
2 = 1/2" NPT **7** = SAE-12
3 = 3/4" NPT **8** = SAE-16
4 = 1" NPT **9** = SAE-20

* Please note, some porting options may not be stocked and are Special Order only.

Accessories

Main Relief Valves (MRV)

We stock Main Relief Valves for Inlet and Mid-inlet setups for both sizes of valves assemblies: MHDV20 & MHDV35. They are screw adjustable and available in different PSI settings.



Port Relief Valves & Check Valves

Our Work Port Relief Valve options are designed to be screwed into the sides of the work sections to control pressure and reduce cavitation; and can be adjustable or fixed depending on the style.

Work Sections

We have a variety of work sections (hydraulic control, air-shift and manual control) available to accommodate a variety of applications and custom builds. Single action, double action and Hi-boy setups are all available for both the MHDV20 and MHDV35 size valves.



Handles

We stock handles in the 8" and 10" size for both standard and Hi-boy styles/variations of valve assemblies.

Hydraulex Corporate
48175 Gratiot Ave
Chesterfield, MI 48051
Toll Free: 800.422.4279
Tel: 586.949.4240

www.hydraulex.com

Hydraulex Detroit
Hydraulex Jackson
Hydraulex Seattle
Hydraulex Memphis

Tel: 586.949.4240
Tel: 800.962.2703
Tel: 253.604.0400
Tel: 901.794.2462

sales@hydraulex.com
sales@metarisusa.com
seattlesales@hydraulex.com
memphisales@hydraulex.com